

# Beautiful II Gingiva

Nano-Hybrid, Gingival Composite with GIOMER Technology



## Beautiful® II Gingiva

Nano-Hybrid, Gingival Composite with GIOMER Technology

*Shofu is dedicated to manufacturing the highest quality products utilizing our innovative technologies to enhance minimally invasive cosmetic dentistry.*

shofu.com  
800.827.4638  
customer-service@shofu.com



## AESTHETIC

**Beautiful II Gingiva** is a nano-hybrid universal composite that comes in five unique shades; allowing you to aesthetically restore patients of all ethnicities by improving gingival symmetry, repairing recession, and disguising exposed C&B margins and implant abutments.



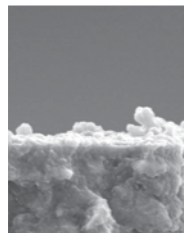
Rodrigo Ecalane, DDS



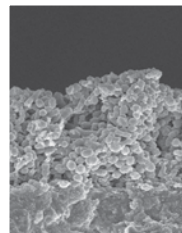
Victor Ortiz, DDS

## FLUORIDE RELEASE AND RECHARGE (GIOMER)

Shofu's GIOMER chemistry gives **Beautiful II Gingiva** long-term ion exchange for anti-bacterial and acid neutralizing effects which may help minimize problems caused by plaque and biofilm. A University of Florida Dental School clinical study showed no secondary caries after 8 years!\*

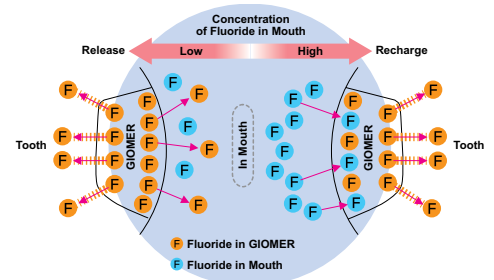


**Beautiful II Gingiva with Giomer**  
Minimal Bacteria



**Competitive Composite**  
Advanced Bacterial Colonization

### Fluoride Release & Recharge from GIOMER



\*1. Gordan V.V., et al. A clinical evaluation of a self-etching primer and a Giomer restorative material: Results at 8 years. JAM Dent. Assoc. 2007;138:621-627

## Beautiful II Gingiva



**Beautiful II Gingiva**  
2.5g syringe

### Shade

G-Dark Pink  
G-Light Pink  
G-Brown  
G-Orange  
G-Violet

### Syringe

☐ Y2257  
☐ Y2256  
☐ Y2259  
☐ Y2260  
☐ Y2258



### ☐ Beautiful II PINK Kit (Item No. GMK1)

- 5 (2.5g) Beautiful II Gingiva syringe
- 1 (2g) Beautiful Flow Gingiva F02 syringe

	G-Dark Pink	G-Light Pink	G-Brown	G-Orange	G-Violet
2.5g					
PN	Y2257	Y2256	Y2259	Y2260	Y2258

# Beautiful II Enamel

## Nano-Hybrid, Enamel Composite with GIOMER Technology



### Beautiful® II Enamel

Nano-Hybrid, Enamel Composite with GIOMER Technology

*Shofu is dedicated to manufacturing the highest quality products utilizing our innovative technologies to enhance minimally invasive cosmetic dentistry.*

shofu.com  
800.827.4638  
customer-service@shofu.com



### AESTHETIC

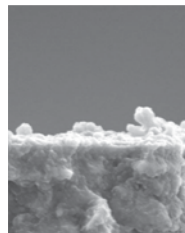
**Beautiful II Enamel** is a nano-hybrid universal composite that comes in four unique shades; allowing you to aesthetically restore cases involving incisal edges, naturally translucent dentition, enamel loss, composite veneering, and other complex cosmetic cases.



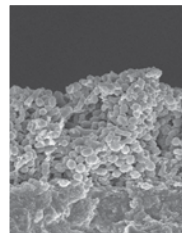
Frank J. Milnar, DDS, AAACD

### FLUORIDE RELEASE AND RECHARGE (GIOMER)

Shofu's GIOMER chemistry gives **Beautiful II Enamel** long-term ion exchange for anti-bacterial and acid neutralizing effects which may help minimize problems caused by plaque and biofilm. A University of Florida Dental School clinical study showed no secondary caries after 8 years!\*

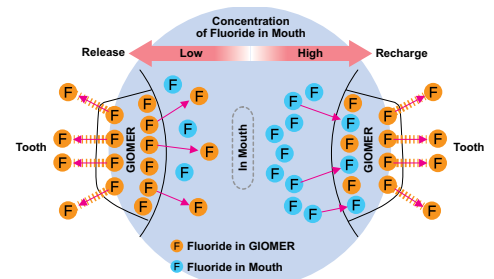


**Beautiful II Enamel with Giomer**  
Minimal Bacteria



**Competitive Composite**  
Advanced Bacterial Colonization

#### Fluoride Release & Recharge from GIOMER



\*1. Gordan V.V., et al. A clinical evaluation of a self-etching primer and a Giomer restorative material: Results at 8 years. JAM Dent. Assoc. 2007;138:621-627

## Beautiful II Enamel

	High-Value Translucent (HVT)	Translucent (T)	Low-Value Translucent (LVT)	Amber (AM)
2.5g				
PN	Y2251	Y2250	Y2252	Y2253



#### BEAUTIFIL II Enamel 2.5g syringe

Shade	Syringe
HV Translucent	<input type="checkbox"/> Y2251
Translucent	<input type="checkbox"/> Y2250
LV Translucent	<input type="checkbox"/> Y2252
Amber	<input type="checkbox"/> Y2253



#### ☐ Beautiful II PINK & WHITE Kit (Item No. GMK3)

- 5 (2.5g) Beautiful II Gingiva syringe
- 1 (2g) Beautiful Flow Gingiva F02 syringe
- 4 (2.5g) Beautiful II Enamel syringes