

LAUNCA



LAUNCA DL-206 Intraoral Scanner

Lighter. Faster. Better.

Easy-to-use scanner for accurate digital impressions with a simple workflow.

- Lightweight ergonomic design
- Powerful post-processing
- Rich details and vivid colors from dual camera 3D scanning
- Removable autoclavable scanner tip
- Multiple solutions: cart-type or portable version with high-definition touch screen
- Incomparable accuracy with more margin detail and sharpness



DENTALTI
| simplifying dental technology

1-800-672-5733 • **dental**TI.com

SCHEDULE A FREE DEMO! info@dentalTI.com

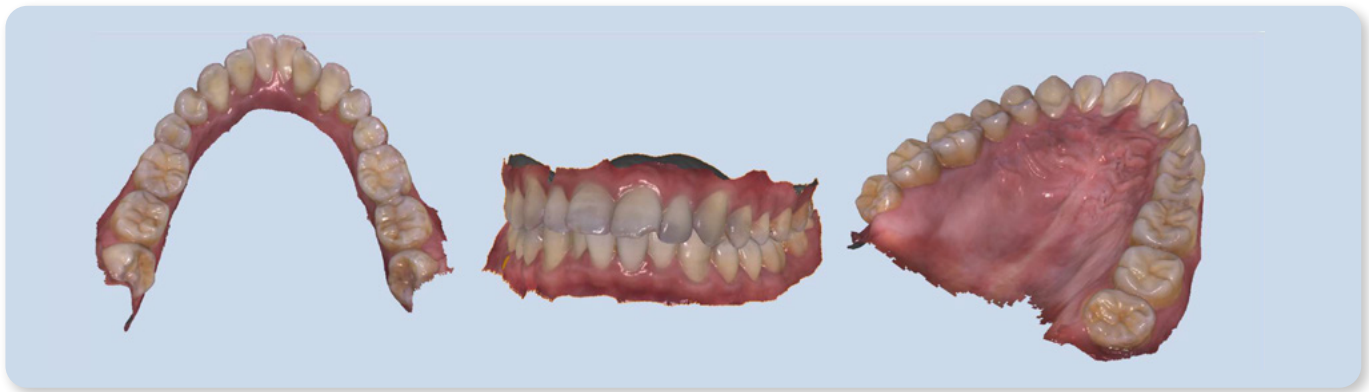
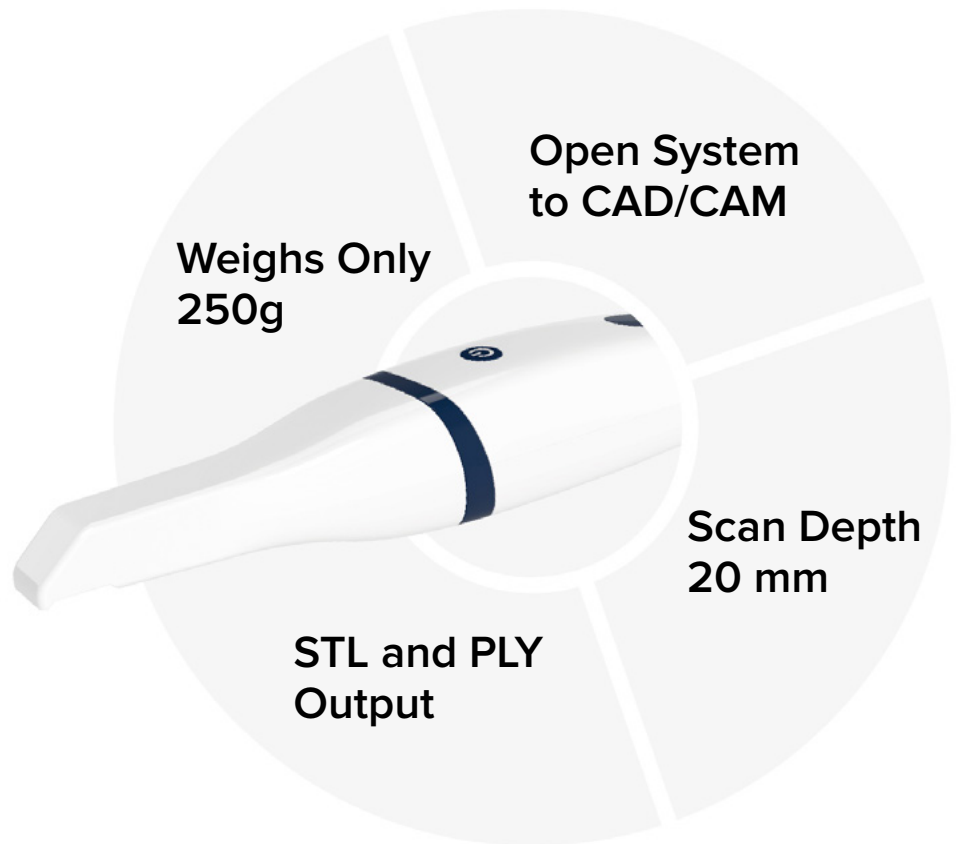
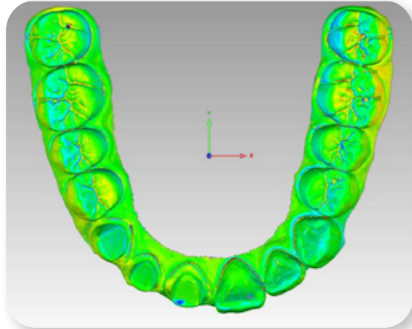
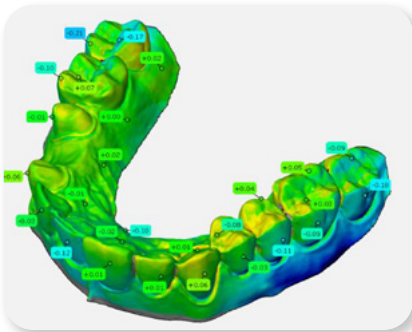
- ▶ Intuitive interface
- ▶ Full arch scan < 40 seconds
- ▶ Full jaw accuracy—local accuracy 10 microns

NO
Subscription
Fees

RELIABLE
Support

3
YEAR
Warranty

LAUNCA



DENTALTI
| simplifying dental technology

Connect with us on social!

 @DentalTI

 @dental.ti

 @Dental TI